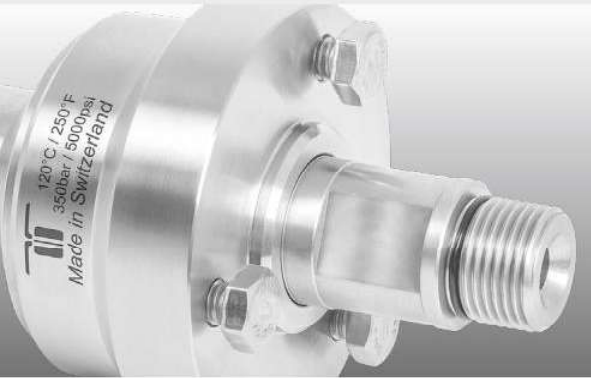


- ✓ Complete stainless steel construction
- ✓ Seal failure warning, through weep holes
- ✓ Sealed stainless steel bearings
- ✓ Carbide seal system

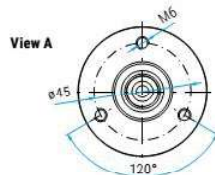
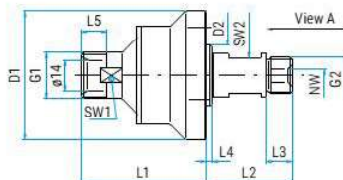
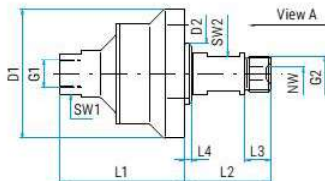
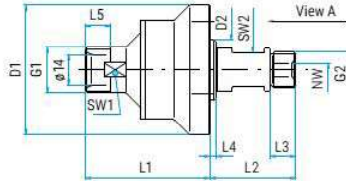
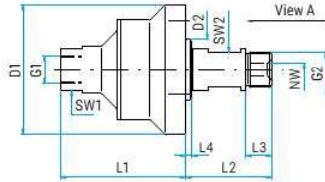
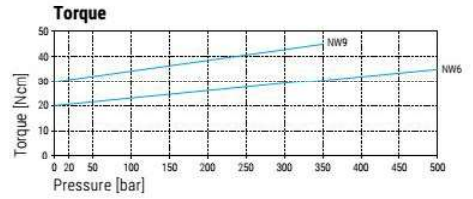
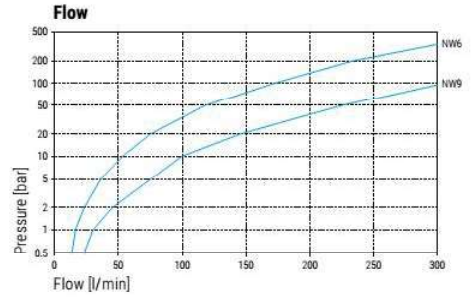


### Application

High flow, high pressure, self rotating applications, surface cleaners, parts washers

#### TECHNICAL DATA

<b>Pressure</b>	DYCI: 350 bar (35 MPa) DYDI: 500 bar (50 MPa)
<b>Temperature</b>	120°C
<b>RPM</b>	max. 2'000 rpm
<b>Body</b>	stainless steel
<b>Inner part</b>	stainless steel
<b>Seal</b>	carbide
<b>Bearing</b>	2x radial ball bearings 1x thrust ball bearing
<b>Throughput medium</b>	pH 3 - 12 10 µm filtered 20 bar compressed air



#### DYCI

Part No.	G1 (F)	G2 (M)	NW	SW1	SW2	L1	L2	L3	L4	D1	D2	Weight
55.003	G1/4" F	G3/8" M	6	19	16	58	37	12	3	60	28	630g
55.103	G3/8" F	G3/8" M	6	22	16	58	37	12	3	60	28	620g
55.603	G3/8" F	G3/8" M	9	22	16	60	37	12	3	60	28	640g

#### DYCI

Part No.	G1 (QV)	G2 (M)	NW	SW1	SW2	L1	L2	L3	L4	L5	D1	D2	Weight
55.203	M21x1.5 M	G3/8" M	6	19	16	58	37	12	3	12	60	28	620g
55.253	M22x1.5 M	G3/8" M	6	20	16	58	37	12	3	12	60	28	630g

#### DYDI (500 bar)

Part No.	G1 (F)	G2 (M)	NW	SW1	SW2	L1	L2	L3	L4	D1	D2	Weight
55.113	G3/8" F	G3/8" M	6	22	16	58	37	12	3	60	28	630g

#### DYDI (500 bar)

Part No.	G1 (QV)	G2 (M)	NW	SW1	SW2	L1	L2	L3	L4	L5	D1	D2	Weight
55.263	M22x1.5 M	G3/8" M	6	20	16	58	37	12	3	12	60	28	620g

36.905	DYCI Seal kit NW 6
36.906	DYCI Seal kit NW 6 + adhesive
36.908	DYCI Seal kit NW 9
36.909	DYDI Seal kit NW 6 (500 bar)

Legend

M... = metric thrust, ..M = male, F = female, G = gas pipe thrust, R = gas pipe thrust conical, QV = quick connects  
SV = profile ring fitting, D = diameter, L = length, NW = nominal width, SW = wrench size